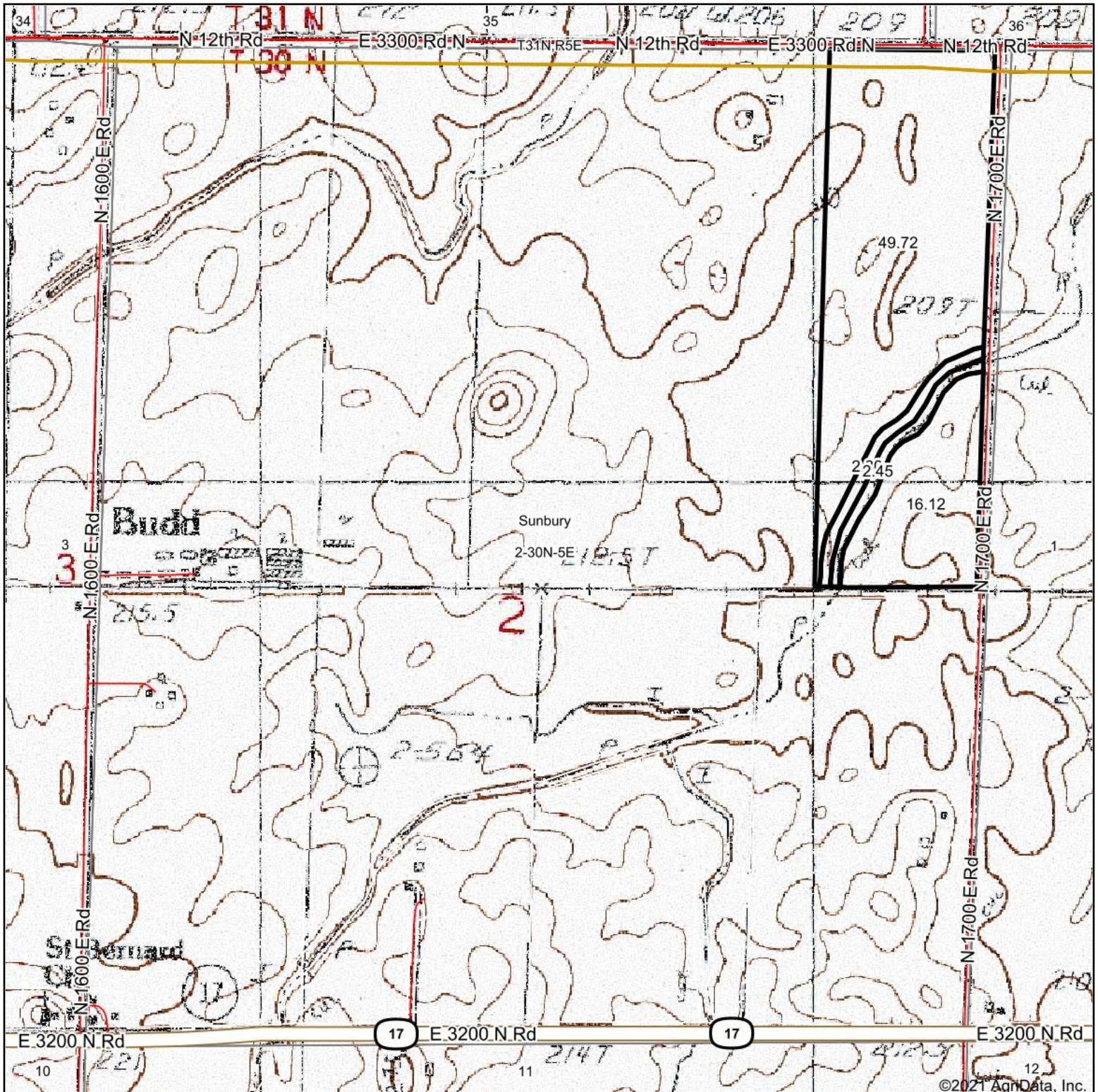


# Topography Map



map center: 41° 5' 59.39, -88° 36' 47.92

0ft 924ft 1849ft

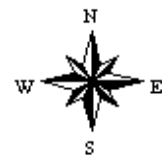
**2-30N-5E**  
**Livingston County**  
**Illinois**

Maps Provided By:



© AgriData, Inc. 2021

www.AgrDataInc.com



2/1/2021

Field borders provided by Farm Service Agency as of 5/21/2008.