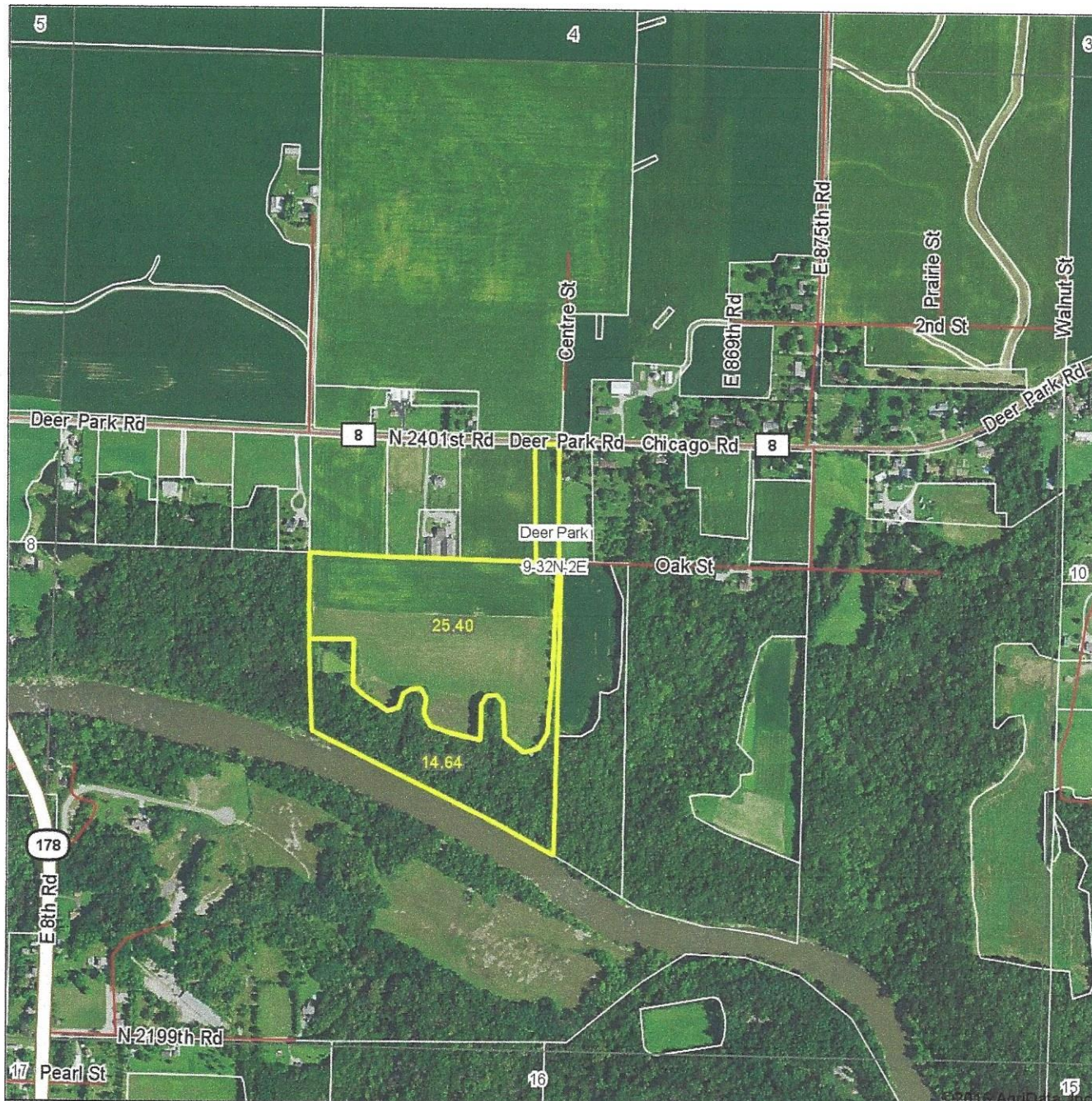


# Aerial Map

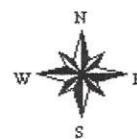


map center: 41° 15' 28.29, -89° 0' 3.15

0ft 837ft 1673ft

Maps Provided By:  
 **surety**  
 CUSTOMIZED ONLINE MAPPING  
 © AgriData, Inc. 2016 www.AgrDataInc.com

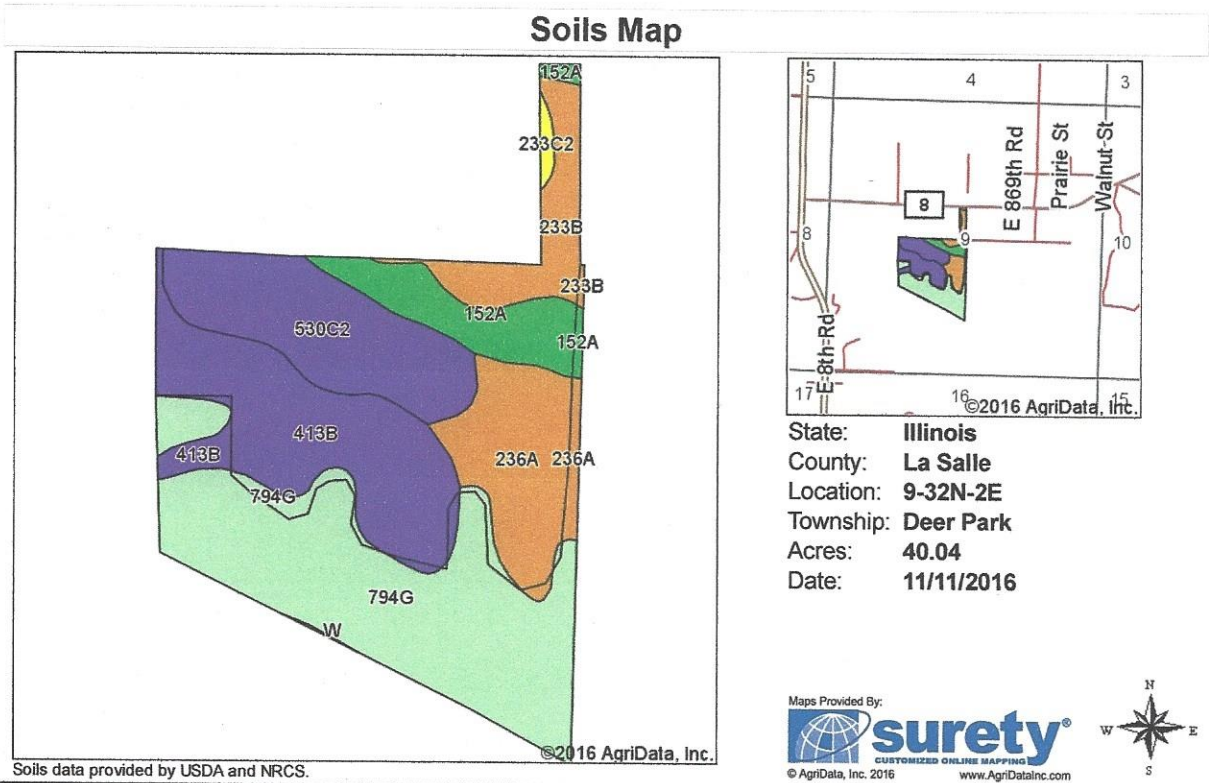
**9-32N-2E**  
**La Salle County**  
**Illinois**



11/11/2016

Field borders provided by Farm Service Agency as of 5/21/2008. Soils data provided by University of Illinois at Champaign-Urbana.












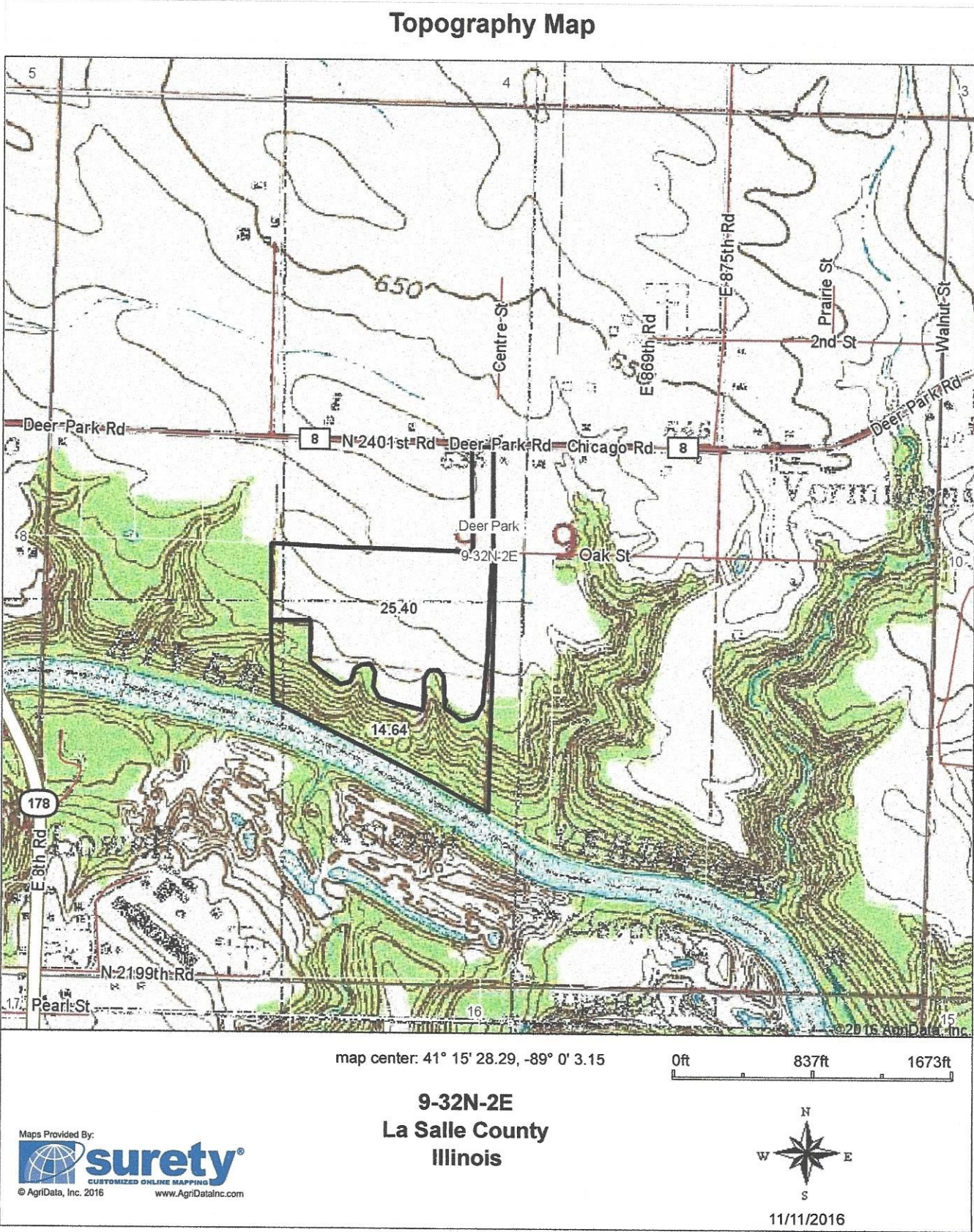
Area Symbol: IL099, Soil Area Version: 10													
Code	Soil Description	Acres	Percent of field	Il. State Productivity Index Legend	Subsoil rooting <sup>a</sup>	Corn Bu/A	Soybeans Bu/A	Wheat Bu/A	Oats Bu/A <sup>b</sup>	Sorghum <sup>c</sup> Bu/A	Alfalfa <sup>d</sup> hay, T/A	Grass-legume <sup>e</sup> hay, T/A	Crop productivity index for optimum management
794G	Marseilles, Northfield, and Ritchey silt loams, 30 to 60 percent slopes	13.92	34.8%										
**413B	Gale silt loam, 2 to 4 percent slopes	8.48	21.2%		FAV	**133	**44	**53	**68	0	0.00	**3.97	**99
**530C2	Ozaukee silt loam, 4 to 6 percent slopes, eroded	6.40	16.0%		FAV	**143	**45	**57	**76	0	**3.57	0.00	**104
236A	Sabina silt loam, 0 to 2 percent slopes	5.04	12.6%		FAV	168	52	65	87	0	0.00	5.14	122
152A	Drummer silty clay loam, 0 to 2 percent slopes	3.20	8.0%		FAV	195	63	73	100	0	0.00	5.64	144
**233B	Birkbeck silt loam, 2 to 5 percent slopes	2.77	6.9%		FAV	**165	**51	**65	**87	0	**5.09	0.00	**121
**233C2	Birkbeck silt loam, 5 to 10 percent slopes, eroded	0.23	0.6%		FAV	**155	**48	**61	**82	0	**4.78	0.00	**113
Weighted Average						100.1	31.9	39.2	52	*	0.95	1.94	73.5

Table: Optimum Crop Productivity Ratings for Illinois Soil by K.R. Olson and J.M. Lang, Office of Research, ACES, University of Illinois at Champaign-Urbana. Version: 1/2/2012 Amended Table S2 B811  
Crop yields and productivity indices for optimum management (B811) are maintained at the following NRES web site:  
<https://www.ideals.illinois.edu/handle/2142/10271>  
\*\* Indexes adjusted for slope and erosion according to Bulletin 811 Table S3  
a UNF = unfavorable; FAV = favorable

- b** Soils in the southern region were not rated for oats and are shown with a zero "0".
- c** Soils in the northern region or in both regions were not rated for grain sorghum and are shown with a zero "0".
- d** Soils in the poorly drained group were not rated for alfalfa and are shown with a zero "0".
- e** Soils in the well drained group were not rated for grass-legume and are shown with a zero "0".





Field borders provided by Farm Service Agency as of 5/21/2008. Soils data provided by University of Illinois at Champaign-Urbana.