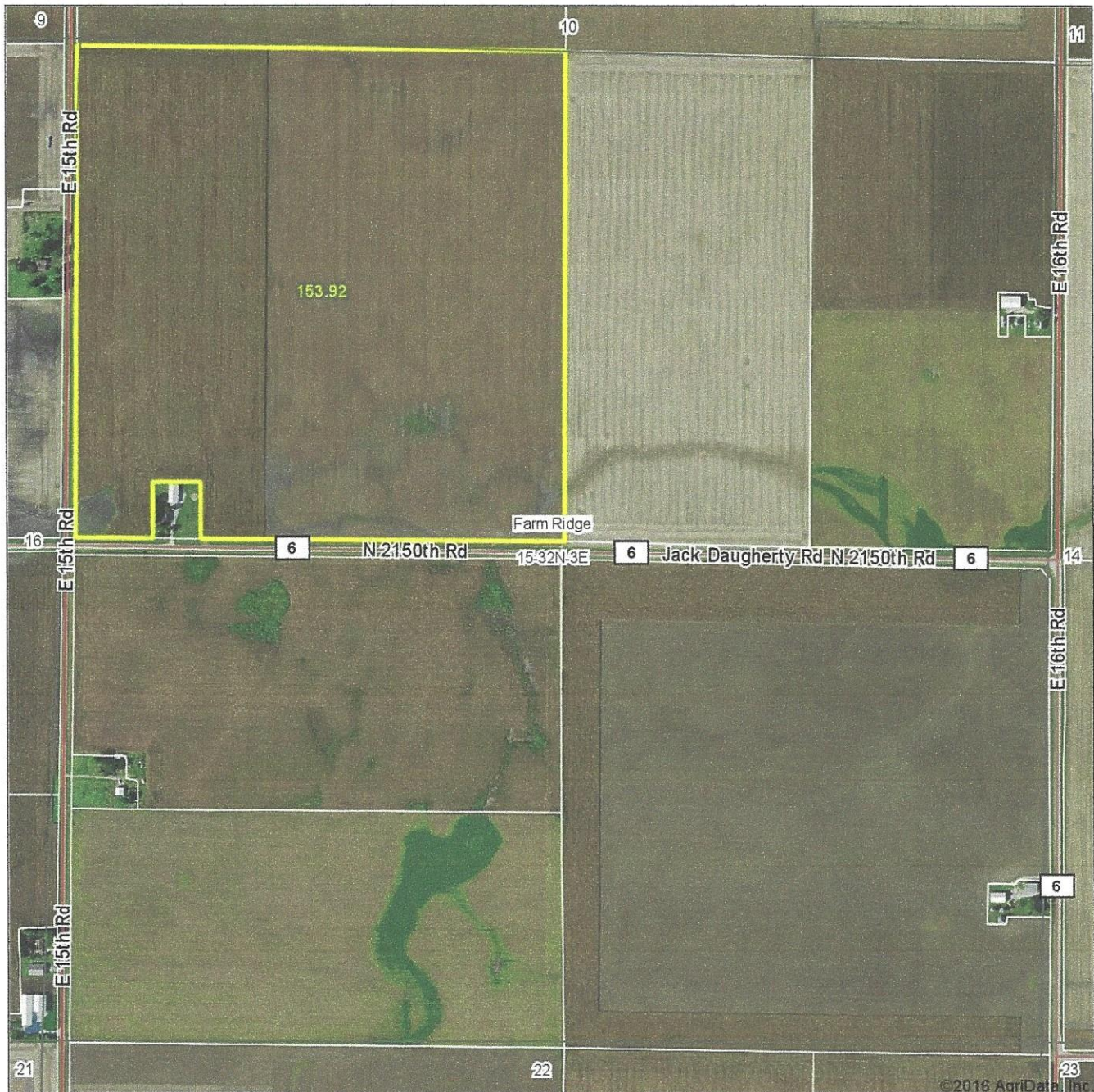


Aerial Map



map center: 41° 14' 39.28, -88° 51' 56.85

0ft 827ft 1654ft

Maps Provided By:
 **surety**
 CUSTOMIZED ONLINE MAPPING
 © AgriData, Inc. 2016 www.AgriDataInc.com

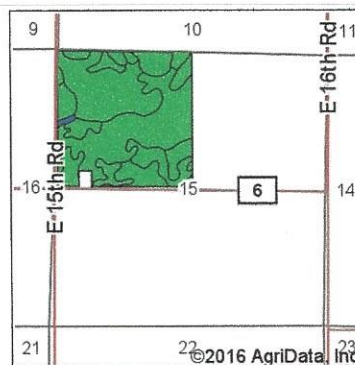
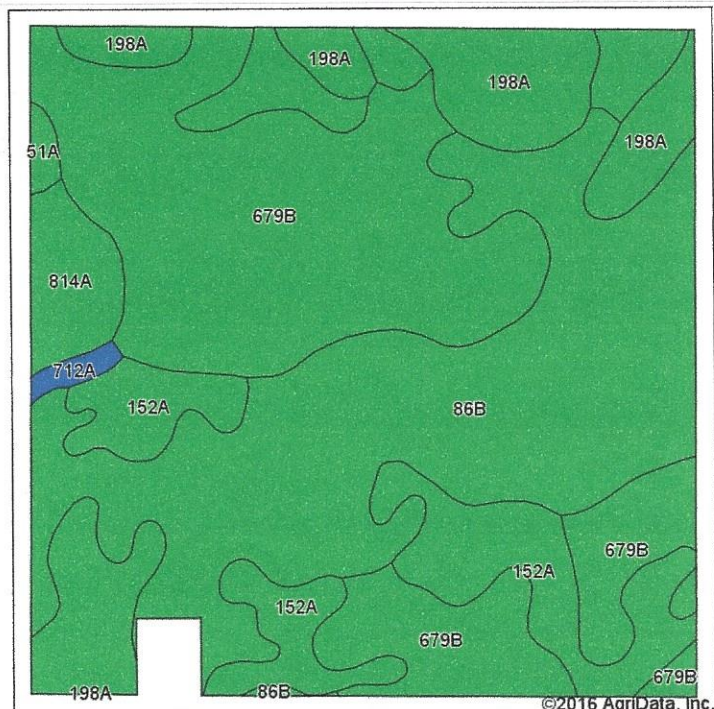
15-32N-3E
La Salle County
Illinois



11/11/2016

Field borders provided by Farm Service Agency as of 5/21/2008. Soils data provided by University of Illinois at Champaign-Urbana.

Soils Map



State: **Illinois**
 County: **La Salle**
 Location: **15-32N-3E**
 Township: **Farm Ridge**
 Acres: **153.92**
 Date: **11/11/2016**



Soils data provided by USDA and NRCS.

Area Symbol: IL099, Soil Area Version: 10

Code	Soil Description	Acres	Percent of field	II. State Productivity Index Legend	Subsoil rooting ^a	Corn Bu/A	Soybeans Bu/A	Wheat Bu/A	Oats Bu/A ^b	Sorghum c Bu/A	Alfalfa d hay, T/A	Grass-legume e hay, T/A	Crop productivity index for optimum management
**679B	Blackberry silt loam, 2 to 5 percent slopes	52.47	34.1%		FAV	**192	**59	**73	**102	0	**6.96	0.00	**141
**86B	Osco silt loam, 2 to 5 percent slopes	51.84	33.7%		FAV	**189	**59	**74	**101	0	**6.83	0.00	**140
152A	Drummer silty clay loam, 0 to 2 percent slopes	30.17	19.6%		FAV	195	63	73	100	0	0.00	5.64	144
198A	Elburn silt loam, 0 to 2 percent slopes	13.15	8.5%		FAV	197	61	74	94	0	0.00	5.77	143
814A	Muscature-Buckhart silt loams, 0 to 3 percent slopes	4.72	3.1%		FAV	193	62	75	102	0	0.00	6.02	145
712A	Spaulding silty clay loam, 0 to 2 percent slopes	0.82	0.5%		FAV	183	58	68	89	0	0.00	5.39	134
51A	Muscature silt loam, 0 to 2 percent slopes	0.75	0.5%		FAV	200	64	75	104	138	0.00	6.02	147
Weighted Average						192	60.1	73.5	100.5	0.7	4.67	1.84	141.5

Table: Optimum Crop Productivity Ratings for Illinois Soil by K.R. Olson and J.M. Lang, Office of Research, ACES, University of Illinois at Champaign-Urbana. Version: 1/2/2012 Amended Table S2 B811

Crop yields and productivity indices for optimum management (B811) are maintained at the following NRES web site:

<https://www.ideals.illinois.edu/handle/2142/10271>

** Indexes adjusted for slope and erosion according to Bulletin 811 Table S3

a UNF = unfavorable; FAV = favorable

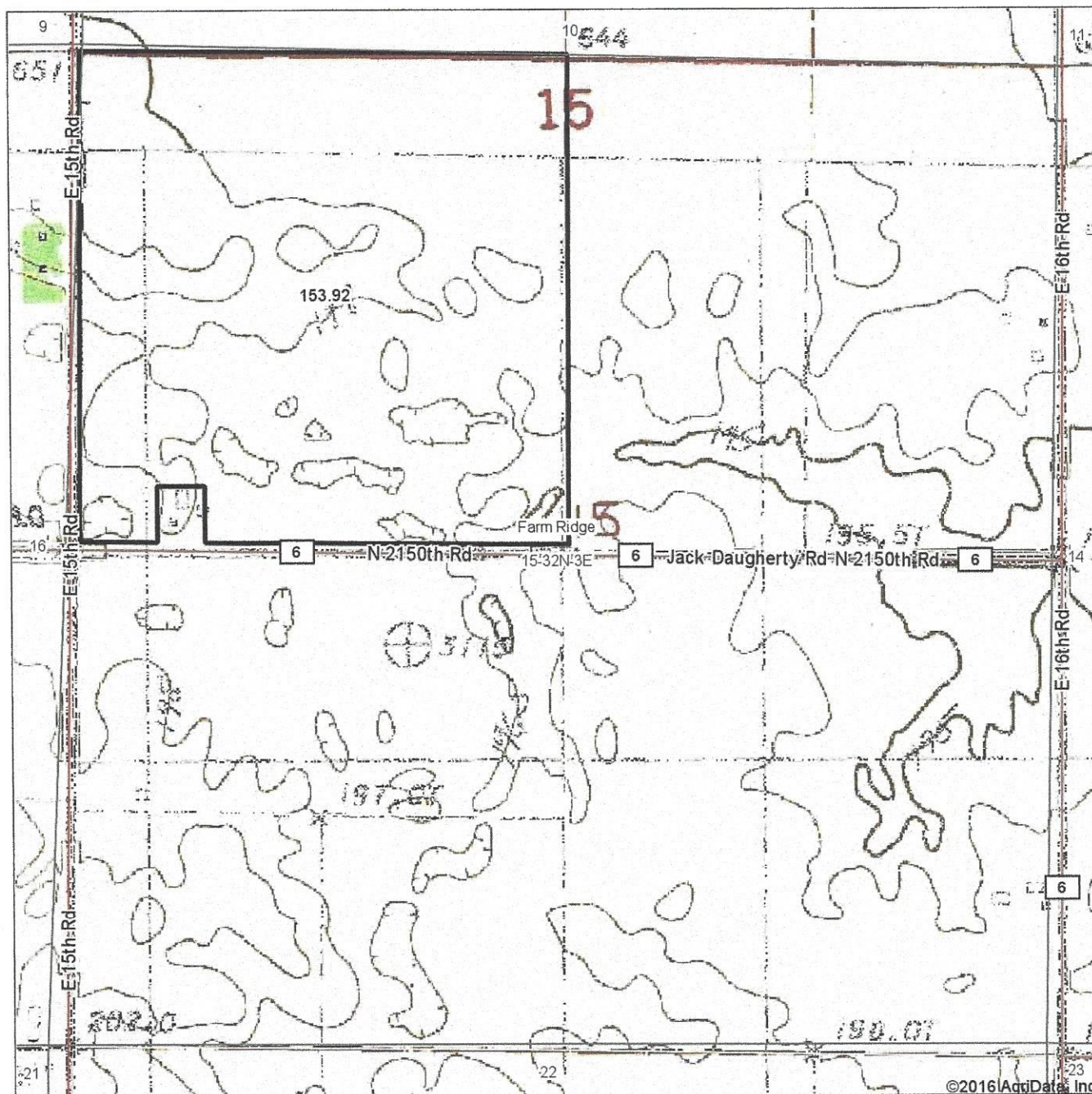
b Soils in the southern region were not rated for oats and are shown with a zero "0".

c Soils in the northern region or in both regions were not rated for grain sorghum and are shown with a zero "0".

d Soils in the poorly drained group were not rated for alfalfa and are shown with a zero "0".

e Soils in the well drained group were not rated for grass-legume and are shown with a zero "0".

Topography Map



map center: 41° 14' 39.28, -88° 51' 56.85

0ft 827ft 1654ft

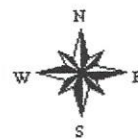
15-32N-3E
La Salle County
Illinois

Maps Provided By:



© AgriData, Inc. 2016

www.AgriDataInc.com



11/11/2016

Field borders provided by Farm Service Agency as of 5/21/2008. Soils data provided by University of Illinois at Champaign-Urbana.