

Illinois

LaSalle

Report ID: FSA-156EZ

U.S. Department of Agriculture

Farm Service Agency

Abbreviated 156 Farm Record

FARM: 7973

Prepared: 7/26/13 2:34 PM

Crop Year: 2013

Page: 1 of 1

DISCLAIMER: This is data extracted from the web farm database. Because of potential messaging failures in MIDAS, this data is not guaranteed to be an accurate and complete representation of data contained in the MIDAS system, which is the system of record for Farm Records.

Operator Name

CHARLES D TUTKO

Farm Identifier

Not Applicable

Recon Number

Farms Associated with Operator:

3197, 3383, 4584, 8635, 10642

CRP Contract Number(s): 1080B , 2668

Farmland	Cropland	DCP Cropland	WBP	WRP/EWP	CRP Cropland	GRP	Farm Status	Number of Tracts
75.34	73.57	73.57	0.0	0.0	8.7	0.0	Active	1
State Conservation	Other Conservation	Effective DCP Cropland	Double Cropped	MPL/FWP			FAV/WR History	ACRE Contract
0.0	0.0	64.87	0.0	0.0			N	None

Crop	Base Acreage	Direct Yield	CC Yield	CCC-505 CRP Reduction	PTPP Reduction
CORN	47.7	126	126	0.0	0.0
SOYBEANS	16.0	38	38	0.0	0.0
Total Base Acres:	63.7				

Tract Number: 45035 Description: M17-W12 NE1/4 SEC 27 T31N R4E

BIA Range Unit Number:

FAV/WR History

N

HEL Status: NHEL: no agricultural commodity planted on undetermined fields

Wetland Status: Tract does not contain a wetland

WL Violations: None

Farmland	Cropland	DCP Cropland	WBP	WRP/EWP	CRP Cropland	GRP
75.34	73.57	73.57	0.0	0.0	8.7	0.0
State Conservation	Other Conservation	Effective DCP Cropland	Double Cropped	MPL/FWP		
0.0	0.0	64.87	0.0	0.0		

Crop	Base Acreage	Direct Yield	CC Yield	CCC-505 CRP Reduction	PTPP Reduction
CORN	47.7	126	126	0.0	0.0
SOYBEANS	16.0	38	38	0.0	0.0
Total Base Acres:	63.7				

Owners: STATE BK OF GRAYMONT TRUST 372

Other Producers: None

Soil Map—La Salle County, Illinois



Natural Resources
Conservation Service

Web Soil Survey
National Cooperative Soil Survey

8/7/2013
Page 1 of 3

Map Unit Legend

La Salle County, Illinois (IL099)			
Map Unit Symbol	Map Unit Name	Acres in AOI	Percent of AOI
91B	Swygert silty clay loam, 2 to 4 percent slopes	3.6	4.5%
235A	Bryce silty clay, 0 to 2 percent slopes	1.0	1.3%
295A	Mokena silt loam, 0 to 2 percent slopes	2.2	2.8%
295B	Mokena silt loam, 2 to 4 percent slopes	11.5	14.5%
375B	Rutland silty clay loam, 2 to 5 percent slopes	3.2	4.0%
435A	Streator silty clay loam, 0 to 2 percent slopes	49.5	62.4%
679B	Blackberry silt loam, 2 to 5 percent slopes	8.4	10.5%
Totals for Area of Interest		79.3	100.0%

Aerial Map



©AgriData, Inc. 2013

map center: 41° 7' 42.88, 88° 44' 58.52

scale: 10466

Maps provided by:



©AgriData, Inc. 2012

www.AgriDataInc.com

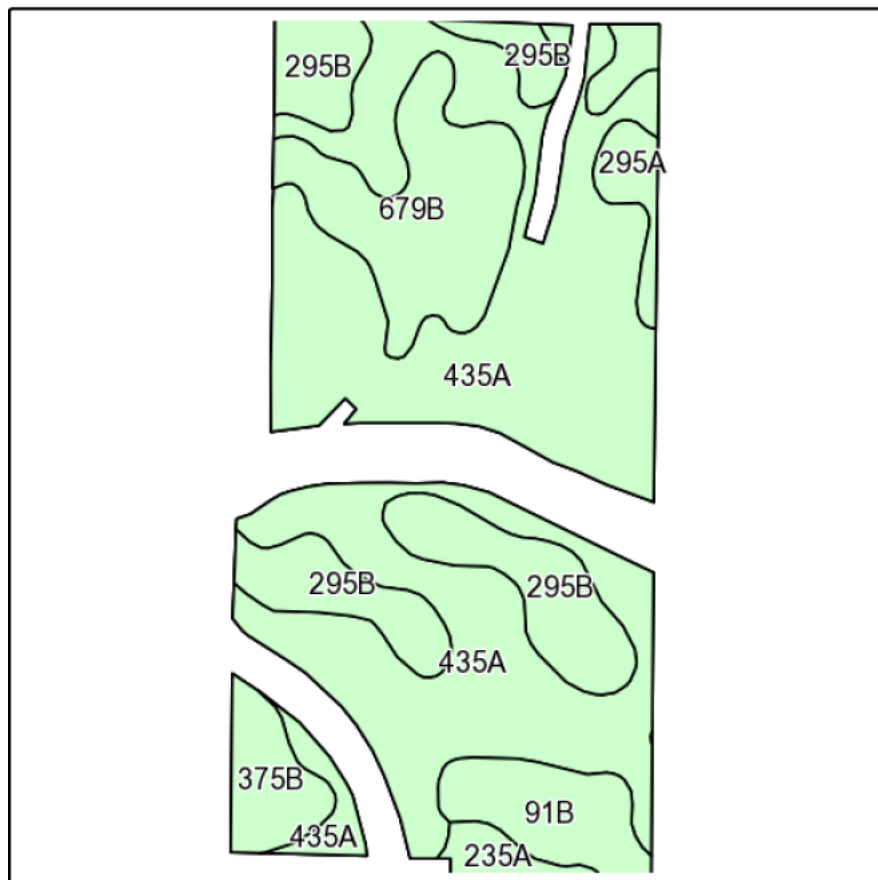
27-31N-4E
La Salle County
Illinois



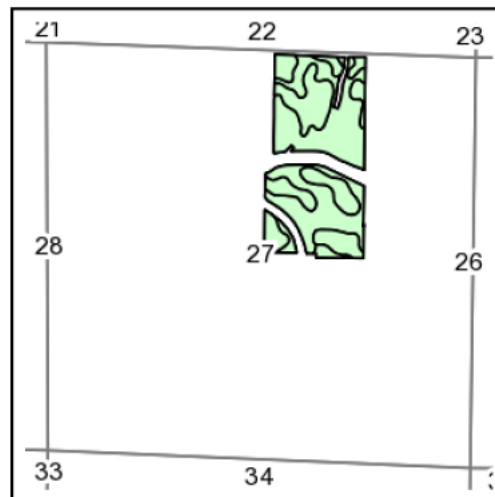
8/12/2013

Field borders provided by Farm Service Agency as of 5/21/2008. Aerial photography provided by Aerial Photography Field Office.

Soils Map



Field borders provided by Farm Service Agency as of 5/21/2008.
Soils data provided by USDA and NRCS.



State: **Illinois**
County: **La Salle**
Location: **27-31N-4E**
Township: **Otter Creek**
Acres: **62.7**
Date: **8/12/2013**



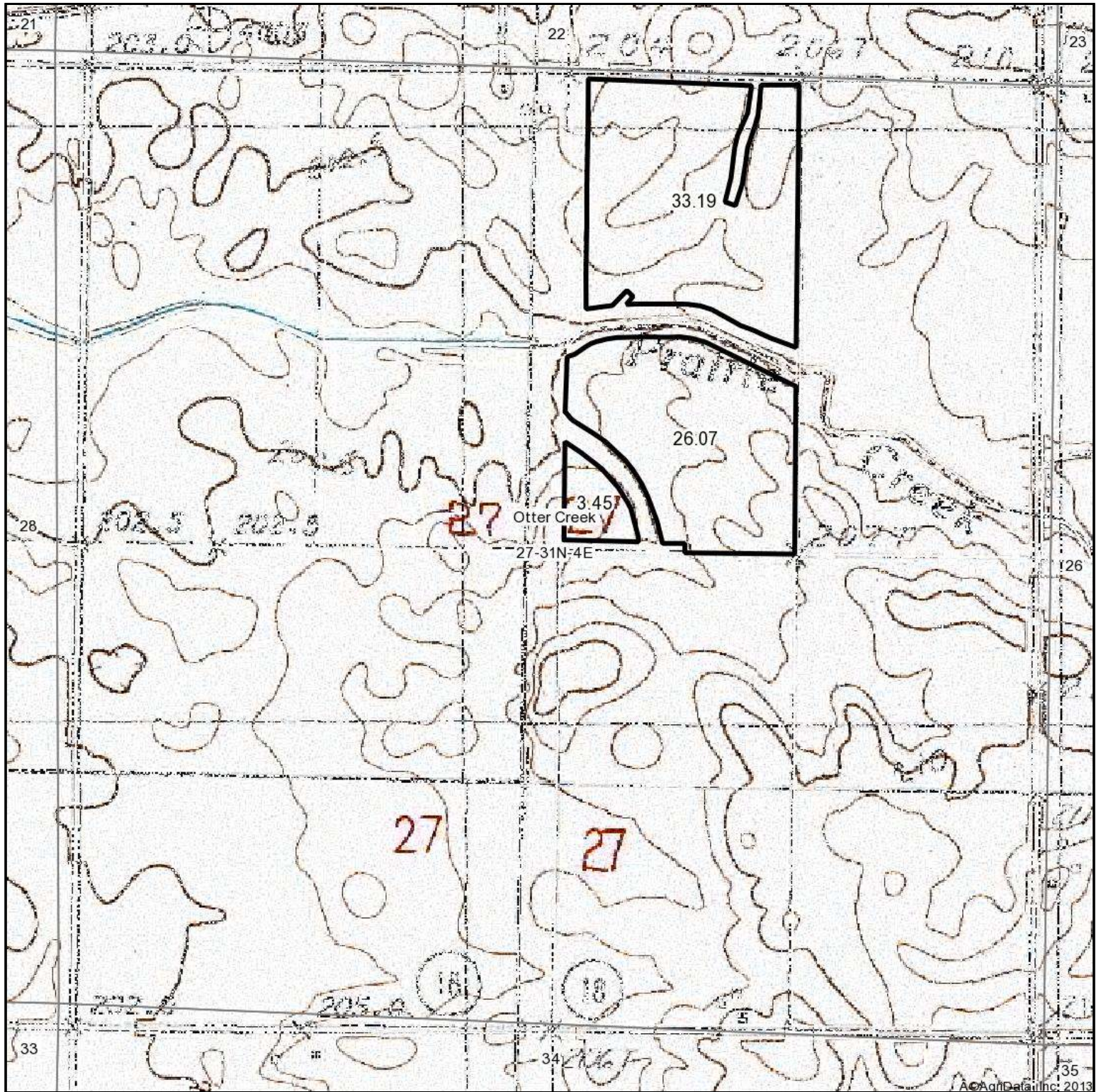
Maps provided by:



©AgriData, Inc 2013
www.AgriDataInc.com

Code	Soil Description	Acres	Percent of field	Non-Irr Class	Corn	Grass legume hay	Grass legume pasture	Oats	Soybeans	Winter wheat
435A	Streator silty clay loam, 0 to 2 percent slopes	36.4	58.2%	Ilw	177	5.1	6.8	92	58	69
295B	Mokena silt loam, 2 to 4 percent slopes	9.7	15.5%	Ile	153	4.4	6.4	78	49	59
679B	Blackberry silt loam, 2 to 5 percent slopes	7.5	11.9%	Ile	173	6.3	9.2	92.1	53	66
91B	Swygert silty clay loam, 2 to 4 percent slopes	3.6	5.7%	Ile	156	4.5	5.9	78	51	62
375B	Rutland silty clay loam, 2 to 5 percent slopes	2.4	3.9%	Ile	178	5.5	7.3	96	57	70
295A	Mokena silt loam, 0 to 2 percent slopes	2.1	3.3%	Ils	172	4.9	6.5	88	54	66
235A	Bryce silty clay, 0 to 2 percent slopes	1	1.6%	Illw	162	4.8	6.3	82	54	64
Weighted Average					171.4	5.1	7	89	55.4	66.6

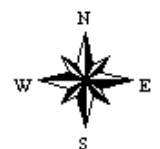
Topography Map



map center: 41° 7' 42.88, 88° 44' 58.52

scale: 10466

27-31N-4E
La Salle County
Illinois



Maps provided by:



©AgriData, Inc. 2012

www.AgriDataInc.com

8/12/2013

Field borders provided by Farm Service Agency as of 5/21/2008. Aerial photography provided by Aerial Photography Field Office.